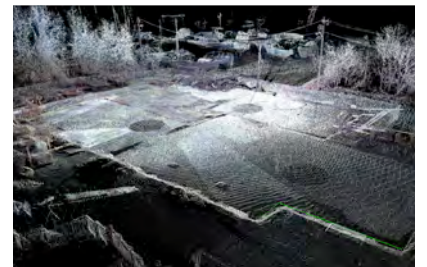


## Large Loss Investigations

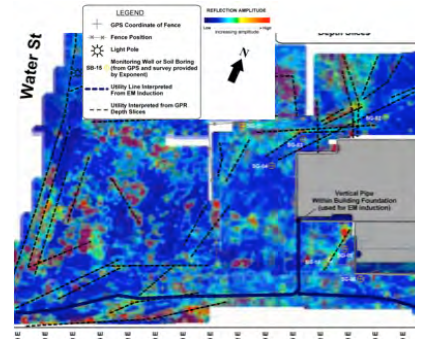
GexCon has many years of experience investigating catastrophic losses at chemical processing, petrochemical, manufacturing, and other industrial facilities. Our expertise includes site inspections using advanced techniques to map the environment, locate gas and vapor pathways, detect chemical residue, and collect and preserve physical evidence. GexCon's computational fluid dynamics (CFD) package, FLACS, is an advanced tool capable of simulating dust, gas, aerosol, and vapor cloud explosions, gas and vapor dispersion, liquid releases with flashing or pool formation, and toxic chemical dispersion.



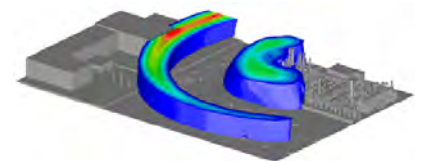
Buncefield Explosion



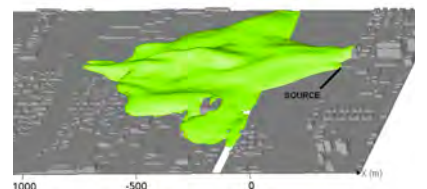
3D Laser Scan - Point Cloud



GPR Mapping



Explosion & Blast Waves



Urban Chlorine Release



## Accident Scene Investigation

- Documentation of damage and debris
- 3-D laser scanning and model reconstruction
- Ground penetrating radar (GPR) to detect potential migration pathways
- Sampling/chemical analysis and evidence collection
- Interacting with government agencies and other involved parties

## Explosion and Blast Modeling

- Reconcile near and far-field blast damage
- Examine release and/or leak scenarios, vapor dispersion
- Identify blast origin and evaluate ignition sources
- Detailed modeling of structures, equipment, ventilation and wind

## Toxic Chemical Releases

- Evaluate releases resulting from tank or pipeline failures, spills, fires, explosions, or industrial operations
- Characterize high and low-pressure gas releases, flashing liquid or pool spills, and cryogenic liquid spills.
- Examine toxic gas dispersion and time-weighted chemical exposure
- Stack emissions and atmospheric conditions

## Litigation Support

- Development of high-quality exhibits and animations
- Deposition and trial testimony

For more information contact:

Scott Davis, Ph.D., P.E., CFEI	+1 301-915-9922 (office)	<a href="mailto:sgdavis@gexcon.com">sgdavis@gexcon.com</a>
President	+1 617-407-3300 (cell)	Consulting / Accident
<b>GexCon US – <a href="http://www.gexconus.com">http://www.gexconus.com</a></b> 7735 Old Georgetown Rd, Ste 1010 Bethesda, MD 20814		